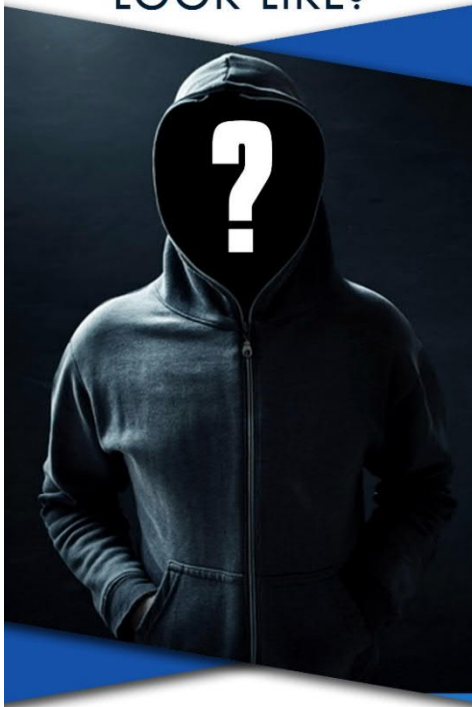


WHAT DOES SUSPICIOUS LOOK LIKE?



IRVINE POLICE DEPARTMENT

1 Civic Center Plaza • Irvine, CA 92606
949-724-7000 • irvinepd.org
In Partnership with the Community



Suspicious Vehicles



- Vehicles being loaded with valuables, especially repair or moving vans, may be involved in a theft or burglary, especially at an unusual hour or location
- Vehicles making aimless or repetitive movements, particularly near schools, parks or playgrounds
- Business transactions conducted from a vehicle, especially involving youth around schools or parks
- Abandoned vehicles
- Persons being forced into vehicles
- A stranger in a car stopping or slowing to talk to a child

Suspicious Vehicles Checklist

- ✓ Make
- ✓ Model
- ✓ Color
- ✓ License plate number and state
- ✓ Number of doors
- ✓ Number of occupants
- ✓ Male or female driver
- ✓ Unusual characteristics
- ✓ Last seen location
- ✓ Last seen direction of travel

Suspicious People

- Peering into parked cars, or attempting to open car doors
- Loitering in front of, casing, or entering or leaving businesses after hours
- When you know your neighbors are not home, anyone entering their house
- Door-to-door solicitors refusing to show a business license, seen peering into windows, or entering side or rear yards
- Anyone forcing entry into a residence, business, or vehicle
- Claims to be with a government agency or utility company without proper uniform or identification
- A person exhibiting unusual behavior
- A child resisting the actions of an adult



Suspicious People Checklist

- ✓ Gender
- ✓ Race
- ✓ Age (approx.)
- ✓ Height
- ✓ Weight
- ✓ Build
- ✓ Hair
- ✓ Eyes
- ✓ Weapons
- ✓ Clothing
- ✓ Make note of tattoos or scars
- ✓ Last seen location
- ✓ Last seen direction of travel

Other Unusual Situations

- Continuous repair work at an unusual location
- A person detaching parts or accessories from vehicles
- Broken windows of a business or residence
- Offers of merchandise or services at extremely low prices (If it sounds too good to be true, it probably is.)
- Heavy foot traffic to and from a residence

Situations Involving Property

- Large amounts of property in private homes or garages may indicate stolen property
- Property not normally found in vehicles such as TVs, tablets, loose auto parts, etc.
- Property carried by someone is not suspicious in general, unless it is at an odd hour or in an unusual place.

Your Help Is Needed

- While some suspicious situations could have innocent explanations, the Irvine Police Department would rather investigate than be called after it is too late.
- If you witness or are a victim of a crime, report it as soon as possible. Even a five-minute delay in reporting can significantly reduce the chance of catching the suspect.
- As soon as possible, write down anything and everything you can remember. Do not rely on your memory.

Stay connected with us through social media



facebook.com/
IrvinePD



twitter.com/
Irvinepolice



instagram.com/
Irvinepolice



AccessIrvine
Mobile
Application

Travel Safety Tips

Written by Rebecca Manriquez from the Crime Prevention Unit
at the Irvine Police Department

Wise travelers plan ahead. In order to travel safely and happily, it begins with an awareness of security and safety concerns. To enjoy your trip and reduce your chances of dealing with thefts and other problems, please review these travel safety tips from the Crime Prevention Unit before you leave.

- Secure your residence:
 - Make sure your residence looks lived in, not empty.
 - Secure all doors, windows, pet entrances, and garage doors.
 - Never leave your house key hidden outside in obvious places, such as under a doormat, below a flower pot, or on the ledge of a door.
 - Transfer valuables to a safety deposit box.
 - Stop all deliveries and arrange for a neighbor to pick up your mail, newspapers and packages.
 - Ask a neighbor to watch your residence while you are away.
 - Arrange to have your landscaping services continued.
 - Plug in timers to turn lights on and off at certain times.
 - Check all light bulbs are working on your indoor lamps, outdoor lighting fixtures, or low voltage lighting system.

- While on the road:
 - Never carry large amounts of cash. If you have large sums of money, do not display it openly and do not carry it in a bank envelope.
 - Be aware of your surroundings and never advertise your travel plans to strangers; this includes on social media. Post pictures once you return from your trip.
 - Take a picture or make a copy of your passport and driver's license.
 - Secure your purse, wallet or travel bag across your body. Consider purchasing slash resistant bags for your trip.

- Car Security:
 - Park vehicles in well-lit areas, lock all doors and close windows.
 - Always secure valuables out of sight, preferably in the trunk.
 - Place maps and travel brochures in your glove department or in a bag.
 - Be aware of loiterers when moving valuables from your vehicle to your trunk or to your hotel room.

- Airport Travel:
 - Leave your valuables, expensive jewelry and designer luggage at home. These items may make you an attractive target for criminals.
 - Don't accept gifts or packages from unknown parties.
 - Report abandoned bags or packages immediately to security.
 - Never leave your luggage unattended.
 - If your luggage has locks, be sure to use them.
 - Mark your luggage so it can easily be identified as yours.
 - Avoid delays in picking up your luggage when you arrive or you risk luggage theft.

- Hotel and Motel Security:
 - If your room is not ready when you attempt to check in, ask to store your luggage in a locked room.
 - Consider registering with your business address rather than your home address.
 - Advise the front desk not to release your room number.
 - Use the safe in your room to secure money, checks, credit cards, and car keys when you are not in your room.
 - Report any lost or stolen items to the hotel management and to the police.

- Sightseeing:
 - Ask for directions and recommended modes of travel to those attractions you want to visit.
 - Ask if any areas of your destination should be avoided – especially at certain times of the day or night.
 - Select tour guides carefully. Look for online reviews of tour guides.
 - Visit the official U.S. Department of State Travel Advisories site at travel.state.gov.

All travelers should take reasonable precautions to protect themselves, their family and their personal property. Be prepared and try not to present yourself as a tourist. Enjoy your travels and *bon voyage!*